



**THURSDAY 2ND JULY
2026**


**EDGBASTON PARK HOTEL
AND CONFERENCE CENTRE,
53 EDGBASTON PARK RD,
BIRMINGHAM, B15 2RS**



DRAFT PROGRAMME

THIS PROGRAMME IS SUBJECT TO CHANGE

OPENING

TIME	TITLE	
10:15AM	Welcome address	<p>Ayça Donaghy, LIA</p> 

Lighting Fit for the Future: Making Buildings Better for People, Health and the Environment




STANDARDS STAGE

THIS PROGRAMME IS SUBJECT TO CHANGE

TIME	TITLE	SPEAKER	
10:45AM	The Building Safety Act: Responsibilities, Risk and Evidence for Lighting	TBC	
<p><i>An overview of how the Building Safety Act affects the lighting industry, clarifying duties, accountability, evidence requirements and the role of lighting products and systems in managing building safety risk</i></p>			
11:15AM	Stage Change		
11:30AM	Fire Safety, Accountability and Part B Compliance	<p>Richard Caple, Lighting Applications & Sustainability Director at Thorlux Lighting</p>	
<p><i>Explains how Building Regulations Part B applies to lighting, clarifying TPa and TPb testing, evidence requirements and responsibilities for managing fire risk.</i></p>			
12:00PM	NETWORKING LUNCH		
13:00PM	European Regulation: Implications for UK Lighting Companies - LightingEurope	<p>Antoine Hattemer, Policy Officer, and Alfredo Menghini, Policy Officer at LightingEurope</p>	 
<p><i>Summarises key European regulatory developments affecting lighting, Product Packaging & Waste Regulation</i></p>			
13:30PM	Stage Change		
13:45PM	Flicker and Temporal Light Artefacts: Raising Knowledge, Dispelling Myths	<p>Ronald Tol, Head of Standards and Regulations EMEA at Signify</p>	
<p><i>Clarifies flicker and temporal light artefacts, explaining relevant metrics, test methods and limitations, and addressing common misconceptions to support accurate, responsible performance claims.</i></p>			
14:15PM	NETWORKING BREAK		

STANDARDS STAGE

THIS PROGRAMME IS SUBJECT TO CHANGE

<p>14:45PM</p>	<p>IEC 60598-2-22: Understanding the Next Changes in Emergency Lighting</p>	<p>Stuart Burns, Senior Technical Policy Manager at The LIA</p>	
<p><i>Provides an update on the first draft of IEC 60598-2-22, outlining key proposed changes, implications for emergency lighting design and testing, and what happens next.</i></p>			
<p>15:15PM Stage Change</p>			
<p>15:30PM</p>	<p>What good looks like: Compliance, Evidence and Getting it Right First Time</p>	<p>Paul Sargent, LIAQA and Overseas Activity Manager & Andy Guest, Membership Services Manager at The LIA</p>	 
<p><i>Looks at how lighting design in homes supports wellbeing, balancing daylight and artificial light and arguing for the same level of rigour applied to non-domestic buildings.</i></p>			
<p>16:00PM Stage Closing Address</p>			

LIGHTING DESIGN STAGE

THIS PROGRAMME IS SUBJECT TO CHANGE

TIME	TITLE	SPEAKER
10:45AM	Lighting for Human Health: Supporting Sleep, Cognition, Comfort and Mental Wellbeing	<i>Dr Shelley James, founder of Age of Light Innovations</i>
<i>Explores how lighting design can support health and wellbeing through visual comfort, contrast, neurodiversity and evidence-led circadian considerations.</i>		
11:15AM	Stage Change	
11:30AM	Designing Light for Later Life: Safety, Confidence and Extending Independent Living	<i>John Bullock, Publisher at The Light Review Ltd</i>
<i>This session examines how age-related changes in vision must directly inform lighting design in homes and care environments. It explores how glare control, balanced contrast and clear wayfinding can reduce falls risk while supporting dignity and confidence.</i>		
12:00PM	NETWORKING LUNCH	
13:00PM	Lighting for Healthy Homes: Designing Light That Supports Everyday Living	<i>Gail Race, Founder, Gail Race Interior Design & Vitae Longevity Living and Iliada Rossi Interior Designer at Rossi Studio</i>
<i>Shows how lighting design can support ageing in place by addressing age-related visual changes, reducing risk and improving confidence, orientation and independence at home.</i>		
13:30PM	Stage Change	

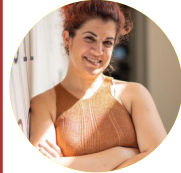
LIGHTING DESIGN STAGE

THIS PROGRAMME IS SUBJECT TO CHANGE

13:45PM

Designing Healthy Interior Spaces:
Integrating Light, Daylight, Acoustics and Air
Quality

**Myrto Skreta-Krikou,
Associate and Dan Bailey,
Associate Director at Buro
Happold**



How light, daylight, acoustics and air quality work together to create healthy interior spaces that support comfort, wellbeing and human performance.

14:15PM

NETWORKING BREAK

14:45PM

Healthier Nights, Better Light: Lighting for
People, Safety and the Environment

**Peter Thorns, Head
of Strategic Lighting
Applications at Thorn
Lighting**



Explores how responsible exterior lighting can balance safety, amenity and environmental protection, addressing ALAN impacts on people, biodiversity and night-time environments.

15:15PM

Stage Change

15:30PM

The Art of Restraint: Designing for Safety,
People, and the Planet

**Graham Festenstein,
Director of Masterplanning
at Nulty+ Design**



Discover why "less is more" in the future of urban illumination. This talk highlights how designers are reimagining the night, using purposeful light to enhance public safety while actively restoring the dark skies essential for human health and local wildlife.

16:00PM

Stage Closing Address

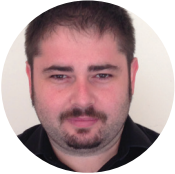

CONNECTED LIGHTING STAGE

**THIS PROGRAMME IS
SUBJECT TO CHANGE**

TIME	TITLE	SPEAKER	
10:45AM	Understanding the Client First: Matching Control Systems to Use, Tenure and Occupancy	Russell Joseph, Senior Group Controls Manager at Luceco plc	
<i>Explores how building use, tenure and fit-out strategy influence the choice of connected lighting systems, moving beyond wired versus wireless to focus on user benefit.</i>			
11:15AM	Stage Change		
11:30AM	Before You Specify: How do you design a building that preserves the design intent	Alan Jackson, Intelligent Lighting Evangelist, Business Development Specialist	
<i>Examines early connected lighting decisions, including open versus proprietary systems, interoperability, data ownership and how to design out future risk before procurement.</i>			
12:00PM	NETWORKING LUNCH		
13:00PM	Integrating Lighting with Building Systems to Support Wellbeing	Adrianna Barr, Principal Lighting Designer at WSP	
<i>How lighting controls can be integrated with wider building systems to create responsive, adaptive environments, with particular emphasis on alignment with frameworks such as the WELL Building Standard and, where appropriate, BREEAM.</i>			
13:30PM	Stage Change		
13:45PM	Lighting Controls for Healthcare: Designing Adaptive Environments for Care, Comfort and Clinical Use	Anthony Barrow, Managing Director at Trojan Lighting Solutions	
<i>This talk explores how zoning, dual switching, scene setting and manual override strategies can be used to create adaptable healthcare spaces that balance automation with intuitive control. The focus is on designing lighting control systems that genuinely improve usability, operational performance and the experience of hospitals, care homes and assisted living environments.</i>			

CONNECTED LIGHTING STAGE

**THIS PROGRAMME IS
SUBJECT TO CHANGE**

14:15PM NETWORKING BREAK			
14:45PM	Designing Connected Homes Around Atmosphere, Usability and Everyday Living	Miguel Aguado, Product Manager UK & EU at Lutron Electronics	
<i>How scene setting, tunable white lighting, zoning and wider smart home integration can support wellbeing, lifestyle and everyday living without introducing unnecessary complexity. The focus is on creating intuitive residential control systems that remain adaptable, understandable and valuable as user needs change over time.</i>			
15:15PM Stage Change			
15:30PM	Designing Emergency Into Controlled Lighting Systems	Stewart Langdown, Director Of Business Development at zencontrol	
<i>How emergency lighting is incorporated into different control architectures, alongside emerging approaches such as adaptable and dynamic emergency signage within the UK.</i>			
16:00PM Stage Closing Address			

SUSTAINABILITY STAGE

THIS PROGRAMME IS SUBJECT TO CHANGE

TIME	TITLE	SPEAKER	
10:45AM	Sustainable Lighting in 2026: What It Really Means	Ali Kay, Sustainability Manager at The LIA	
<p><i>What does sustainable lighting look like in 2026? Many companies will describe that they are on a sustainability 'journey'. If we are all on journeys; then where are the maps? where do we need to stop?, where are we going?, and are we all heading for the same destination on the same path?</i></p>			
11:15AM	Stage Change		
11:30AM	The UK Net Zero Carbon Buildings Standard: What is lighting expected to deliver?	Mitchel Waite, Industry Relations Leader - UK & EU at Lutron and Graeme Shaw, Head of Application Global Application Management at Thorn Lighting	 
<p><i>Explores what the Net Zero Carbon Building Standard expects from lighting, including its contribution to operational and embodied carbon and how this affects design, specification and verification.</i></p>			
12:00PM	NETWORKING LUNCH		
13:00PM	LCA and EPDs, do we need to start yet?	Leela Shanker, Sustainability Director, Design Lab at WAP Sustainability	
<p><i>The latest on LCA and EPD use, are the reasons building for manufacturers and are lighting designers and specifiers using the data? As manufacturers and lighting designers what do the next steps look like?</i></p>			
13:30PM	Stage Change		

SUSTAINABILITY STAGE

THIS PROGRAMME IS SUBJECT TO CHANGE

13:45PM

BREEAM 2026: Are you maintaining that excellence?

Cosmin Ticlean, Head of Lighting, and Anna Buchanan, Principal Consultant at BRE



This session outlines what is required to maintain BREEAM performance and compliance throughout the building life cycle.

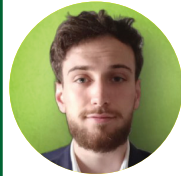
14:15PM

NETWORKING BREAK

14:45PM

Lighting Europe Sustainability updates. From Digital Product Passports to the Energy performance of Buildings directive, how to prepare?

Antoine Hattemer, Policy Officer, and Alfredo Menghini, Policy Officer at LightingEurope



Sets out the practical implications of Digital Product Passports for lighting manufacturers and specifiers, focusing on data, traceability and compliance.

15:15PM

Stage Change

15:30PM

Sustainability in lighting cannot be all about efficacy and product focussed regulation, what else can we do?

Neil McLean, Government and Industry Relations lead at Lutron



Lighting increasingly delivers its benefits at systems level but is regulated at product level. In this talk we hear how the Lighting industry must advocate for system level approaches that move past simple product level sustainability requirements, such as efficacy and standby power, to good lighting design and controls system design, integration and use. Is this also the answer to protecting the health and quality of our lit environments?

16:00PM

Stage Closing Address